

# Renoveringsdagarna Spritfabriken Kv. Örnen 4, Eslöv

Christoffer Sandholm, byggnadsingenjör, LINK Arkitektur

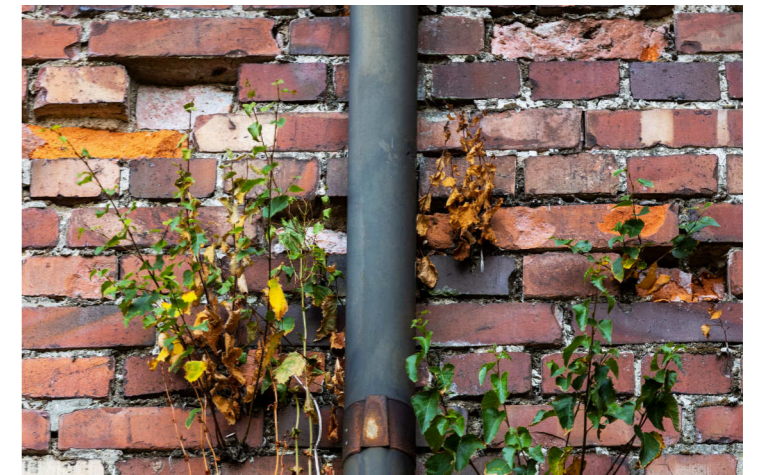




# Eslövs tegelsslott



Sprittfabriken



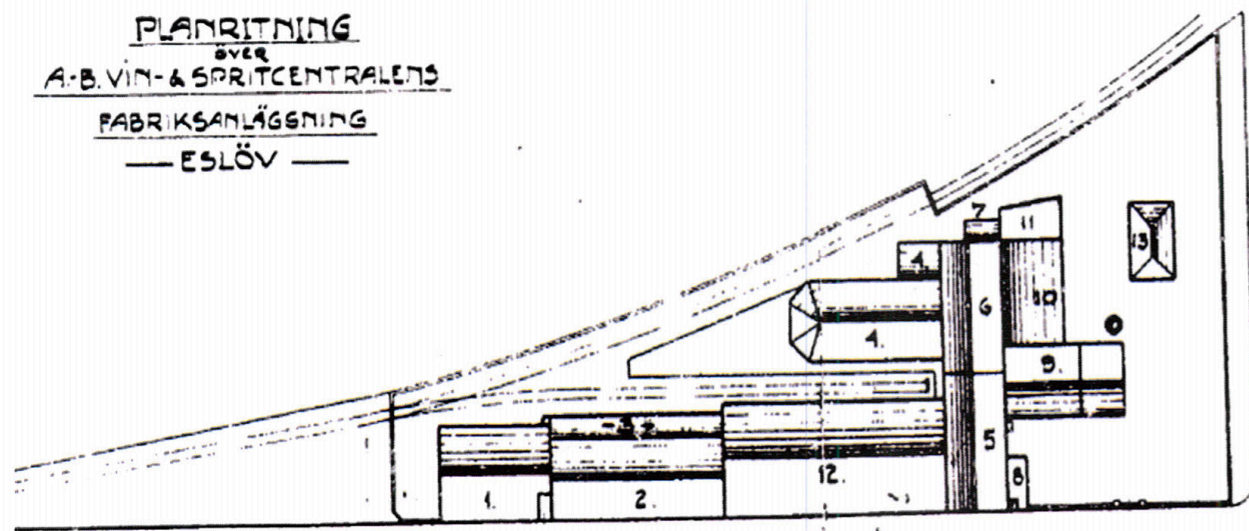


# Sprittfabrikens ursprung

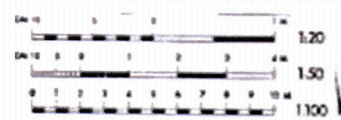
Sprittfabriken



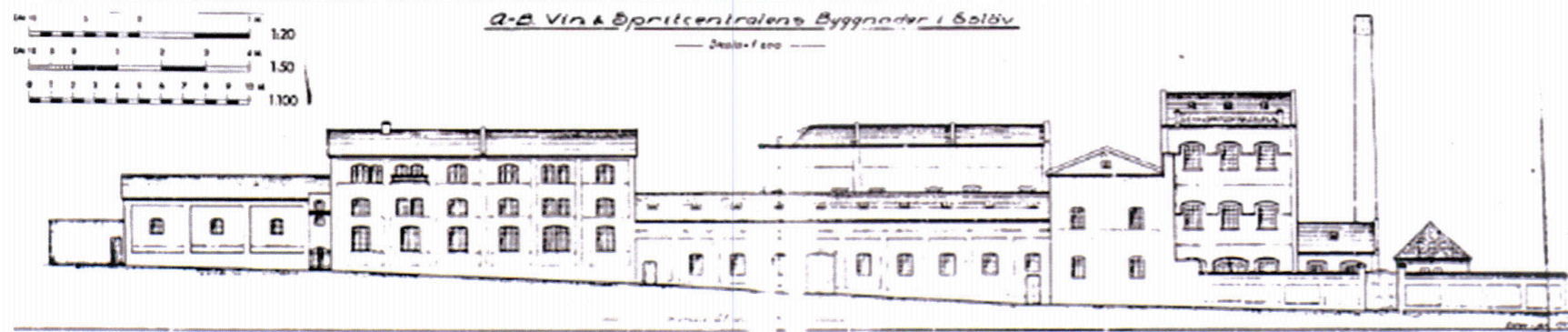
PLANRITNING  
ÖVER  
A.-B. VIN- & SPRITCENTRALENS  
FABRIKSANLÄGGNING  
— ESLÖV —



- 1 NEDERLAG
- 2 D:O
- 3 KONTORS- & EXPLOKALER
- 4 NEDERLAG
- 5 KALLRENINGSVERK
- 6 NEDERLAG
- 7 TRANSFORMATOR
- 8 ÅRPNNEHUS
- 9 APPARATBYGGNAD
- 10 ÅRPNNEHUS
- 11 KOLBOX
- 12 NEDERLAG UNDER PLATTFORM
- 13 PUMPHUS
- 14 GARAGE & FÖRRÄDSBYGGNAD
- 15 FÖRRÄDSKJUL



A.-B. Vin & Spritcentralens Byggnader i Esköv

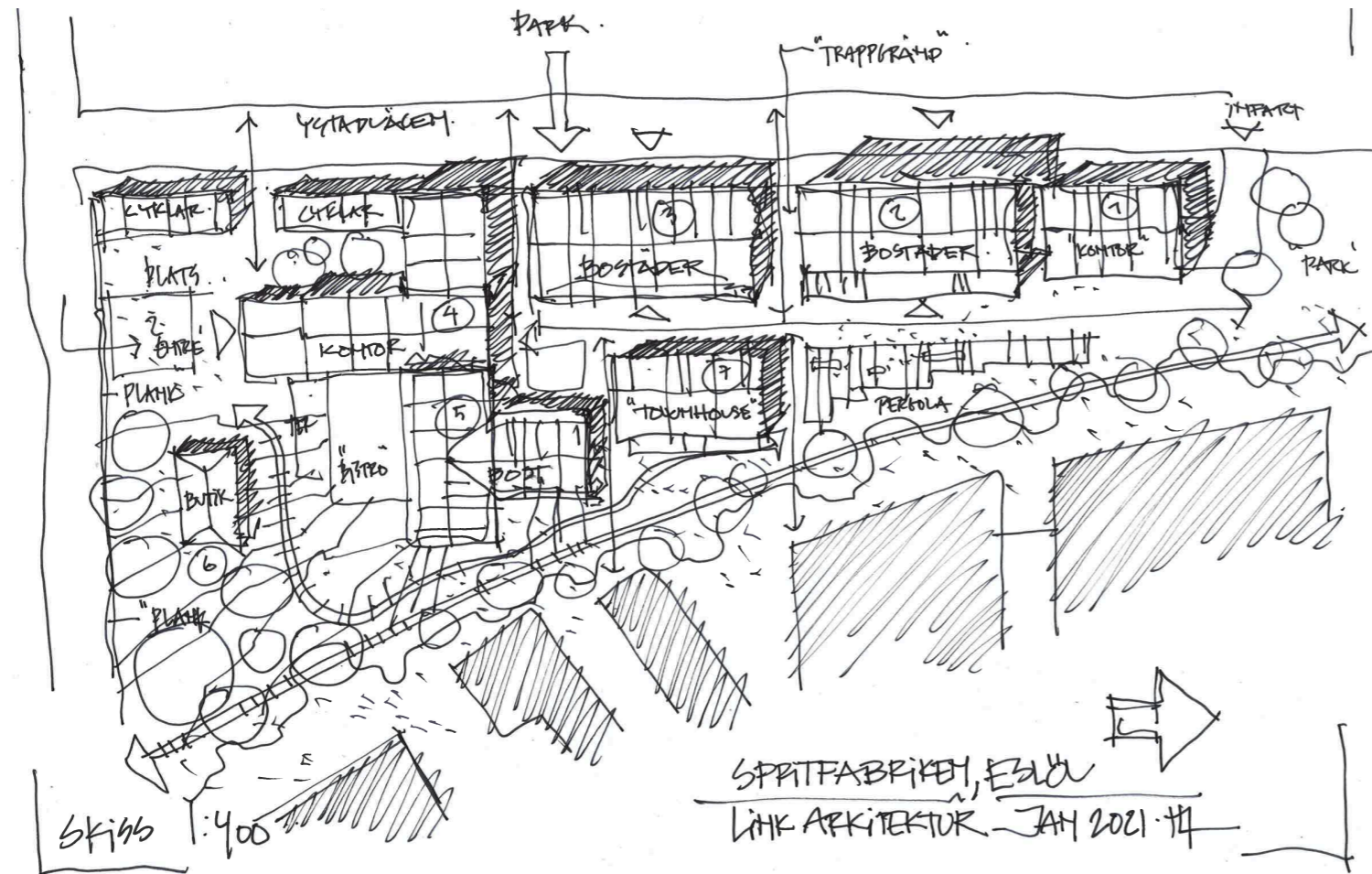




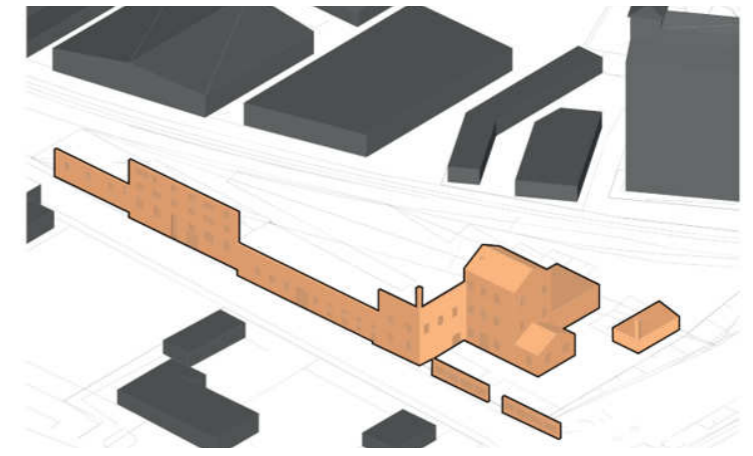
# Uppgiften och utmaningar



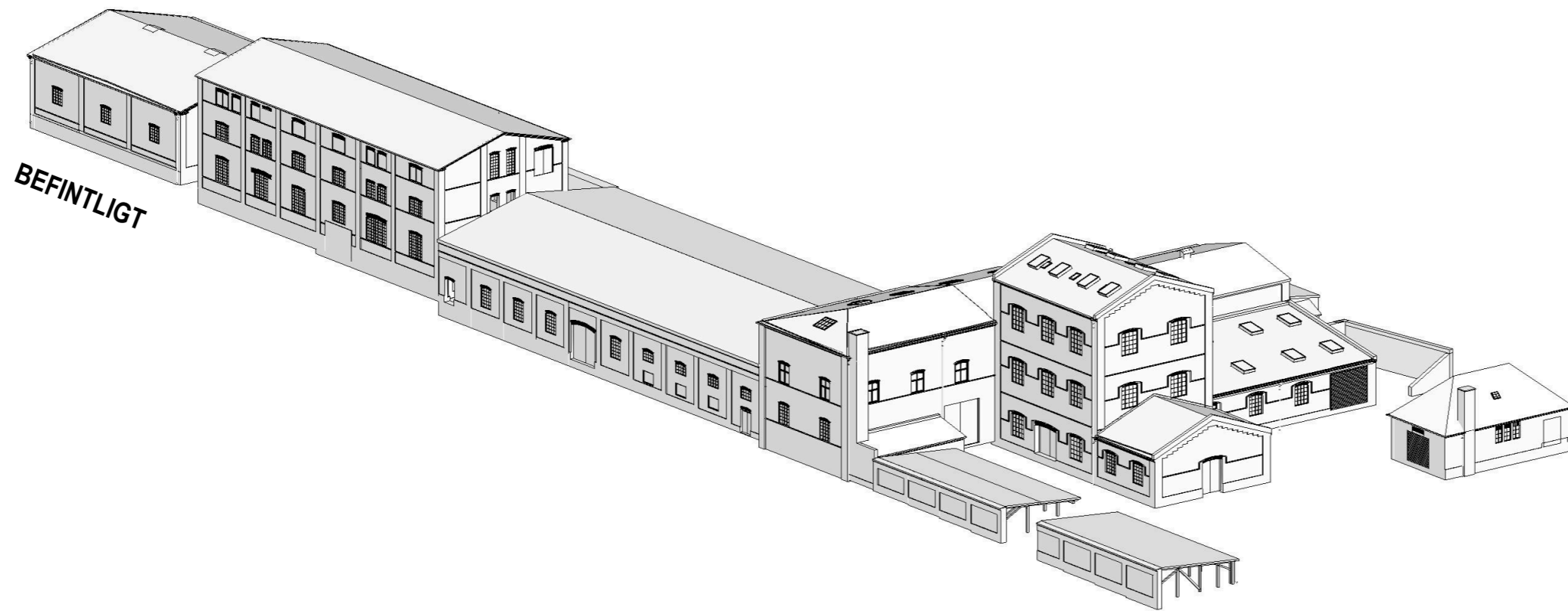
Spritfabriken





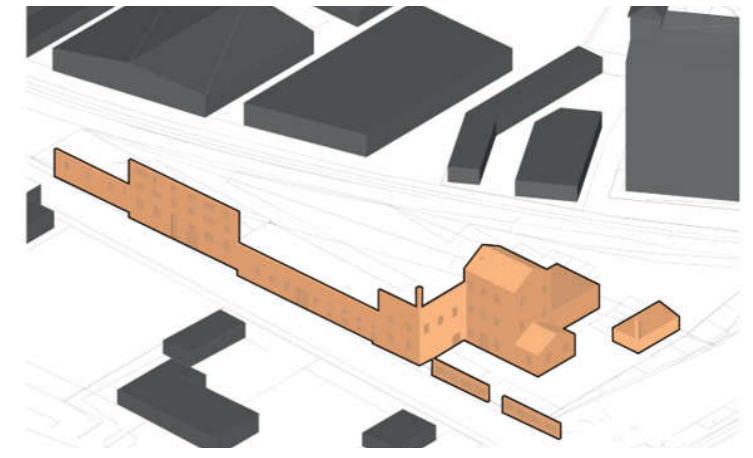


Bevarandekrav enligt detaljplan

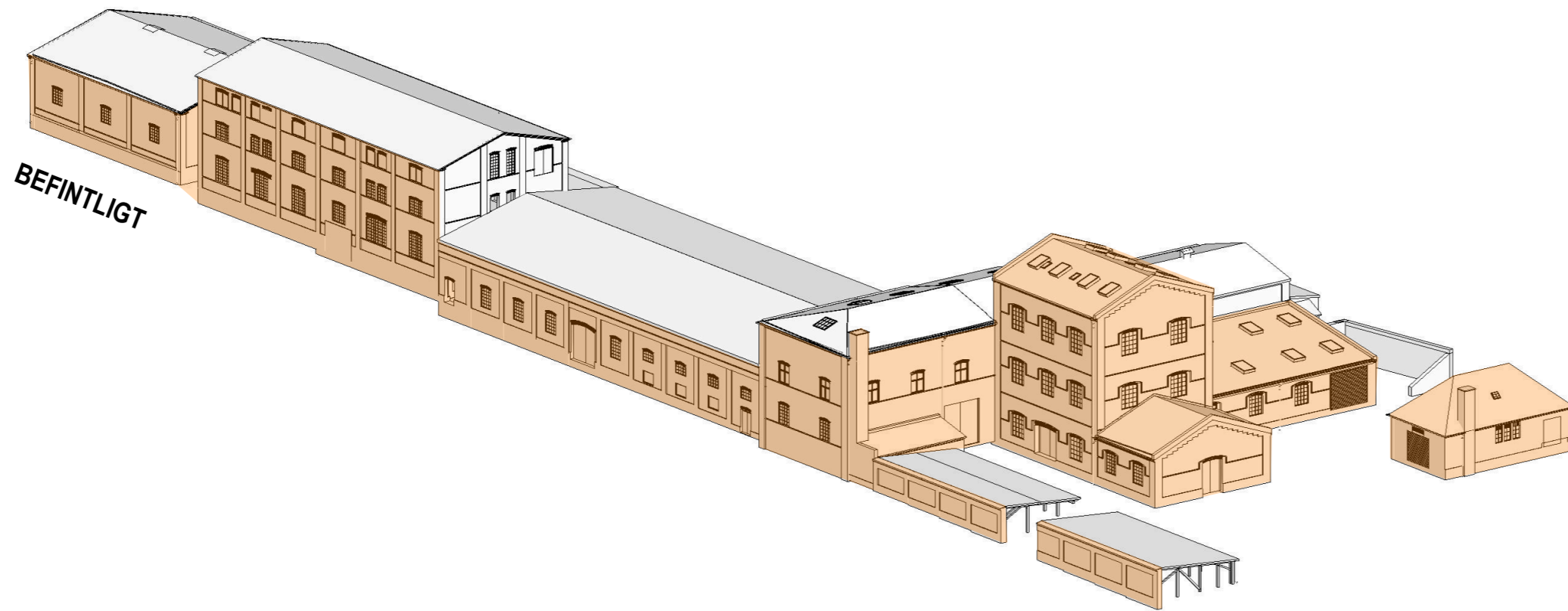




# Transformation



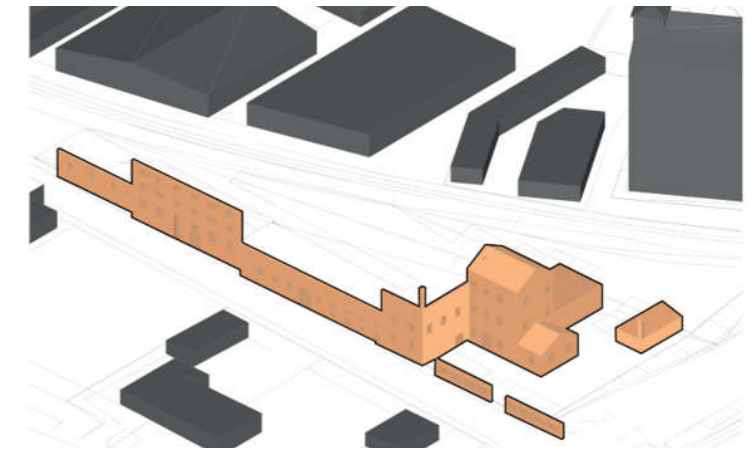
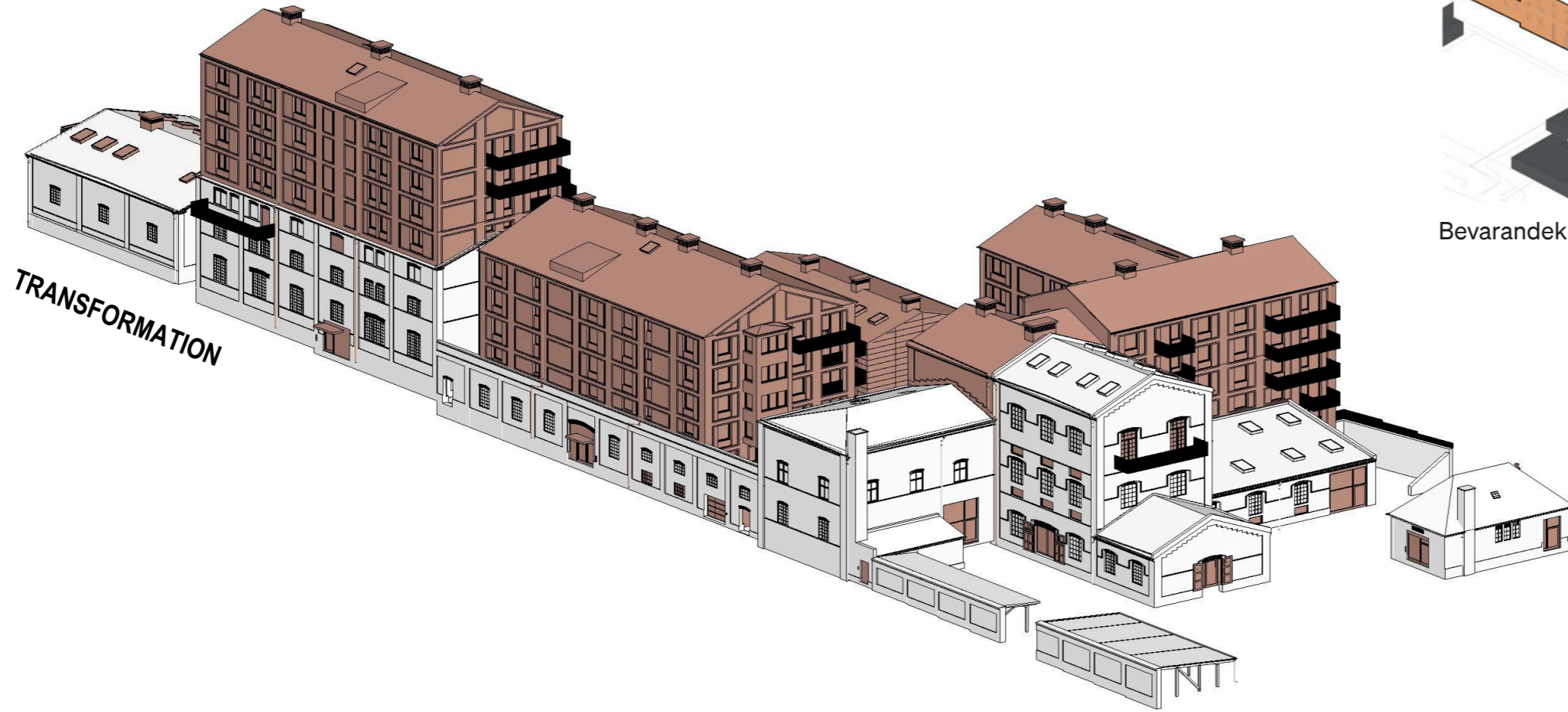
Bevarandekrav enligt detaljplan



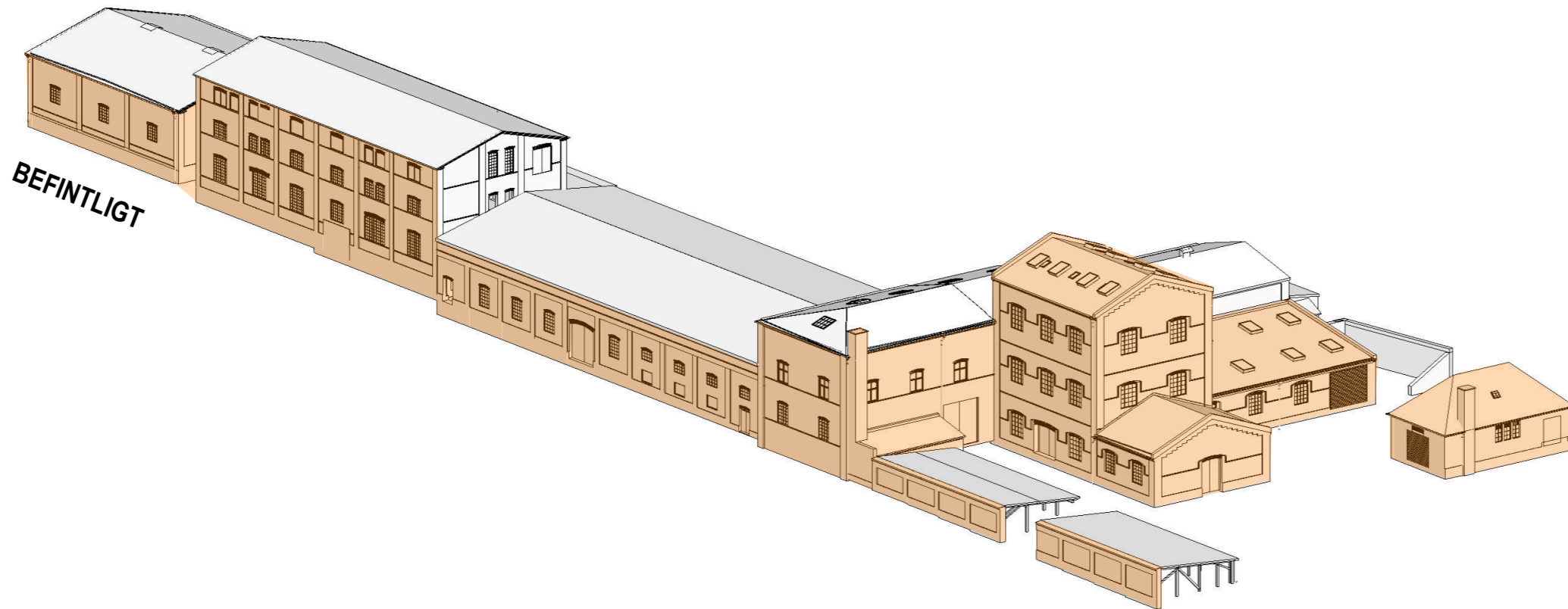
**BEFINTLIGT**



# Transformation



Bevarandekrav enligt detaljplan

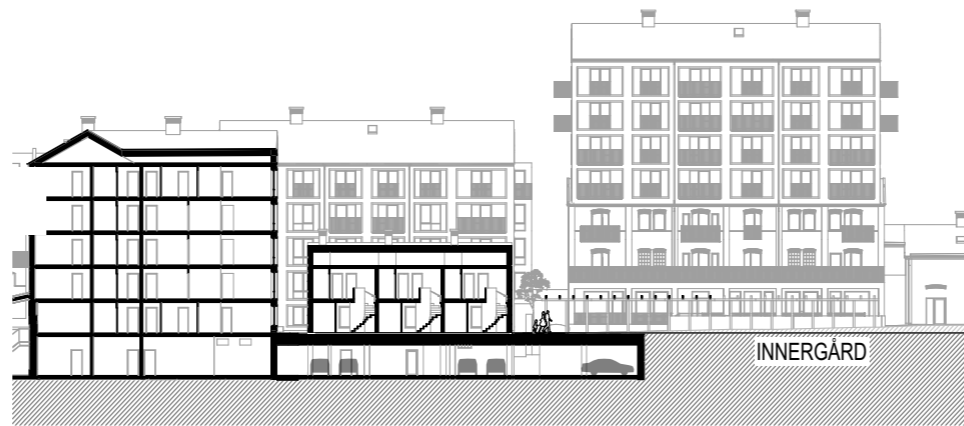
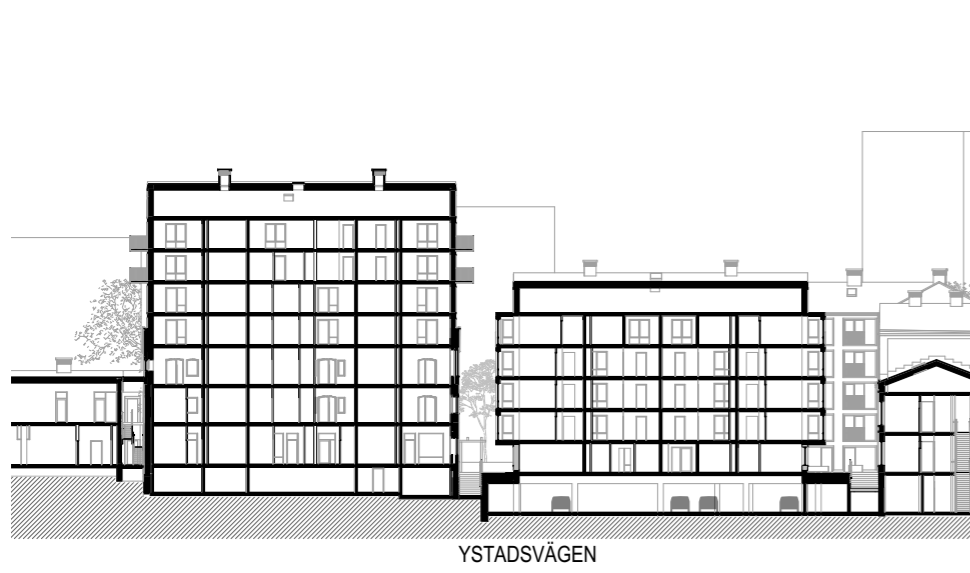
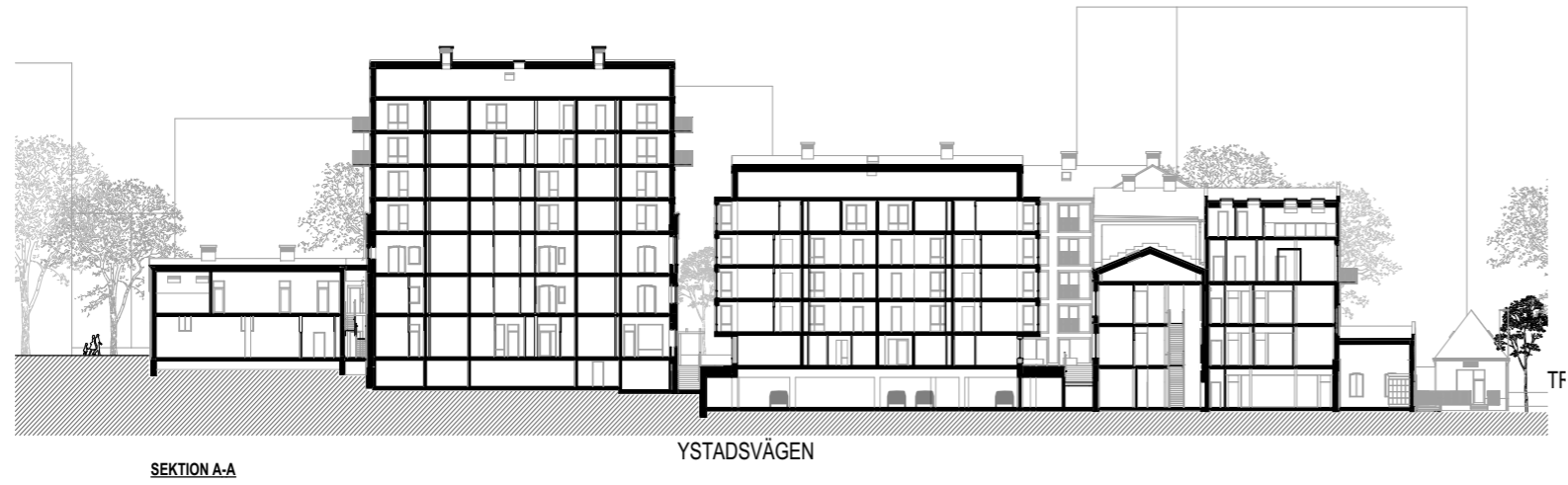


Sprittfabriken



# Transformation

Sprittfabriken





LINK:s koncept

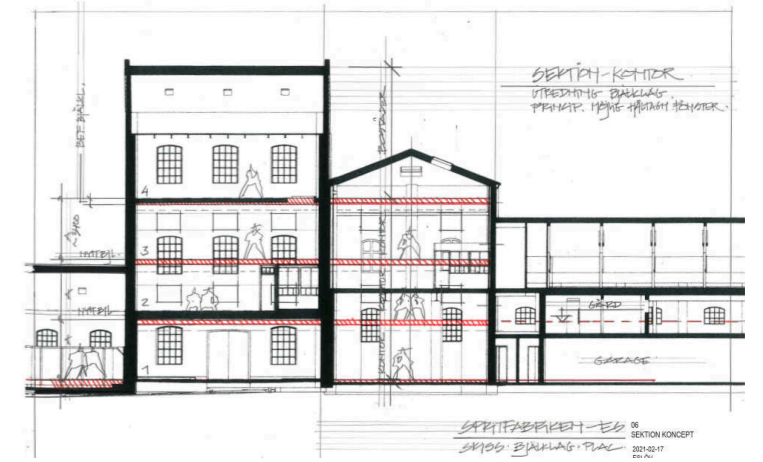
Sprittfabriken



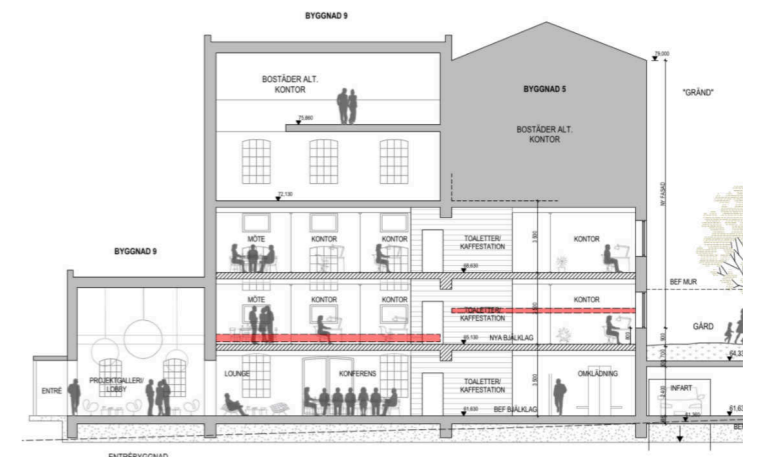
LINK Arkitektur



# Användbara byggnader



Sprittfabriken

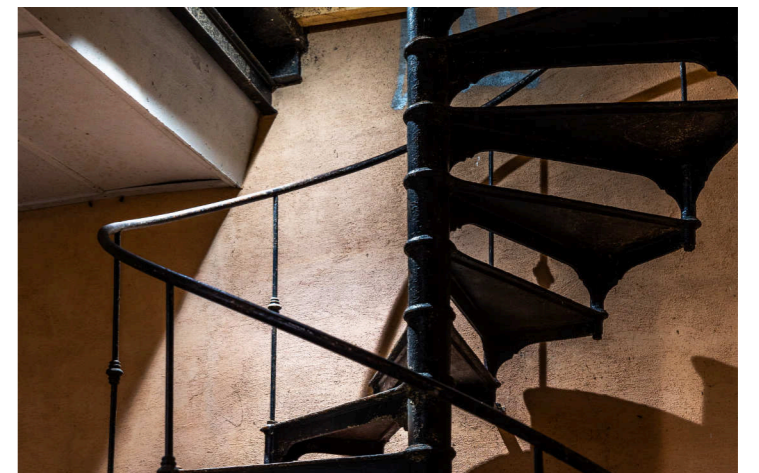




# Cirkularitet

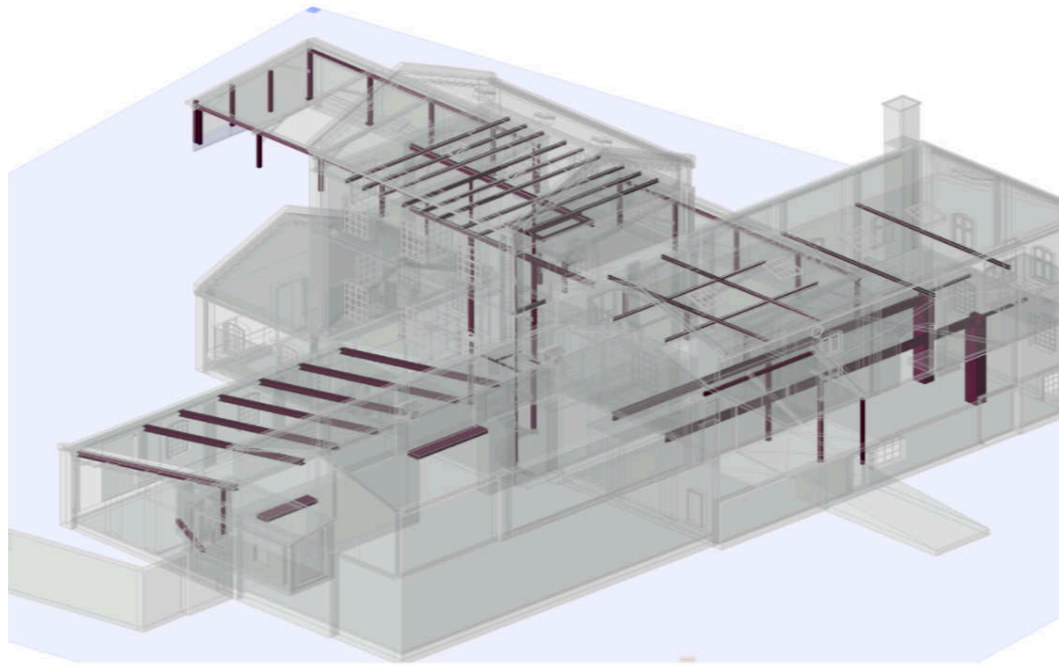


Sprittfabriken

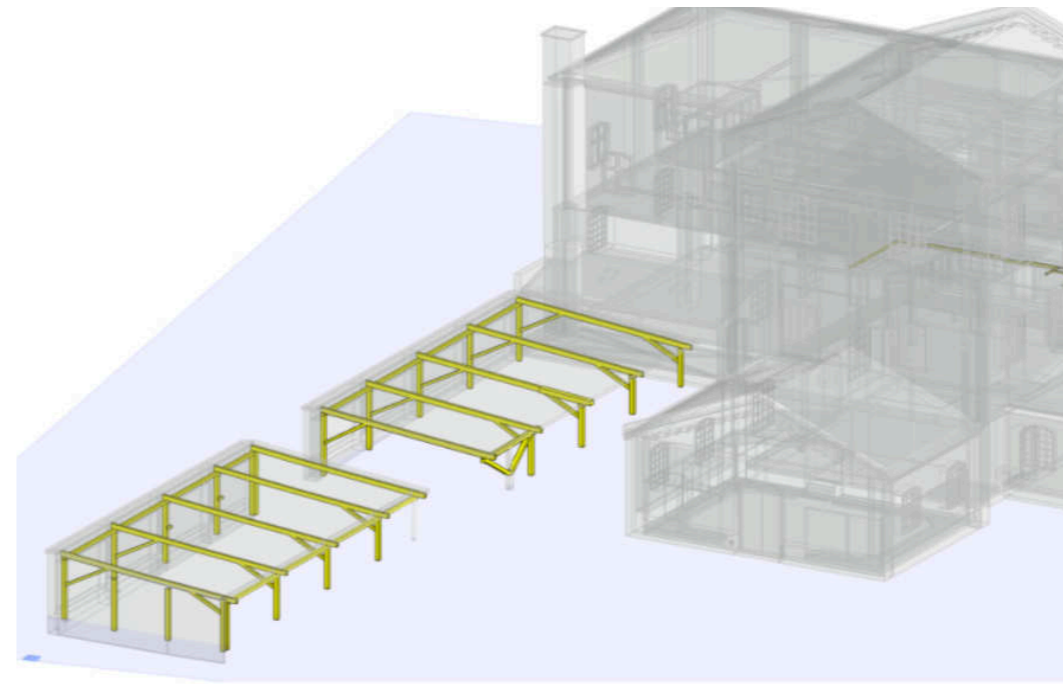




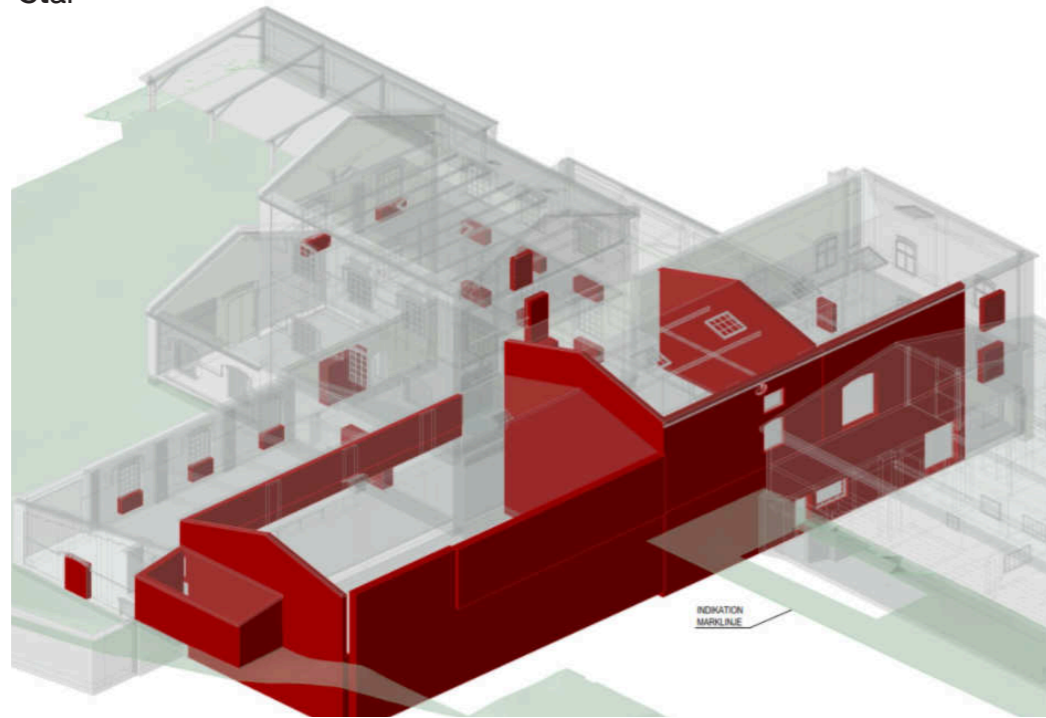
# Punktmolnets betydelse - nyckeln till framgång



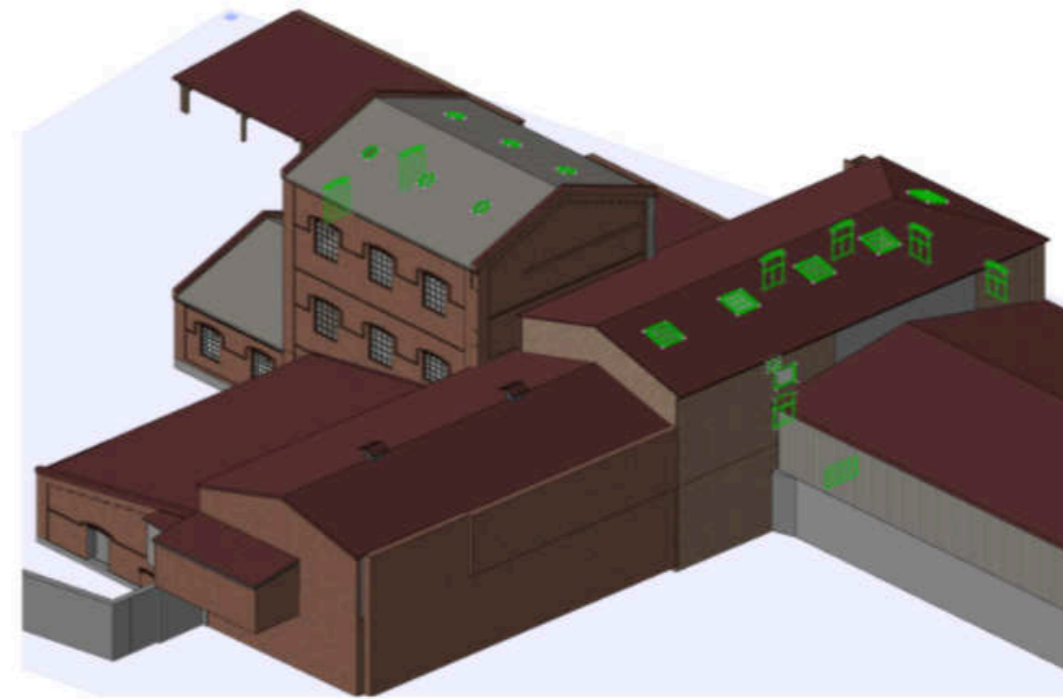
Stål



Trä



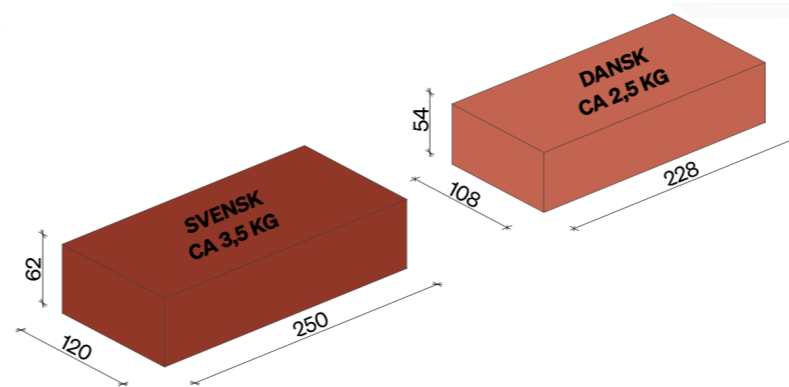
Tegel



Fönster



# Arkitektens roll i återbruket



Sprittfabriken





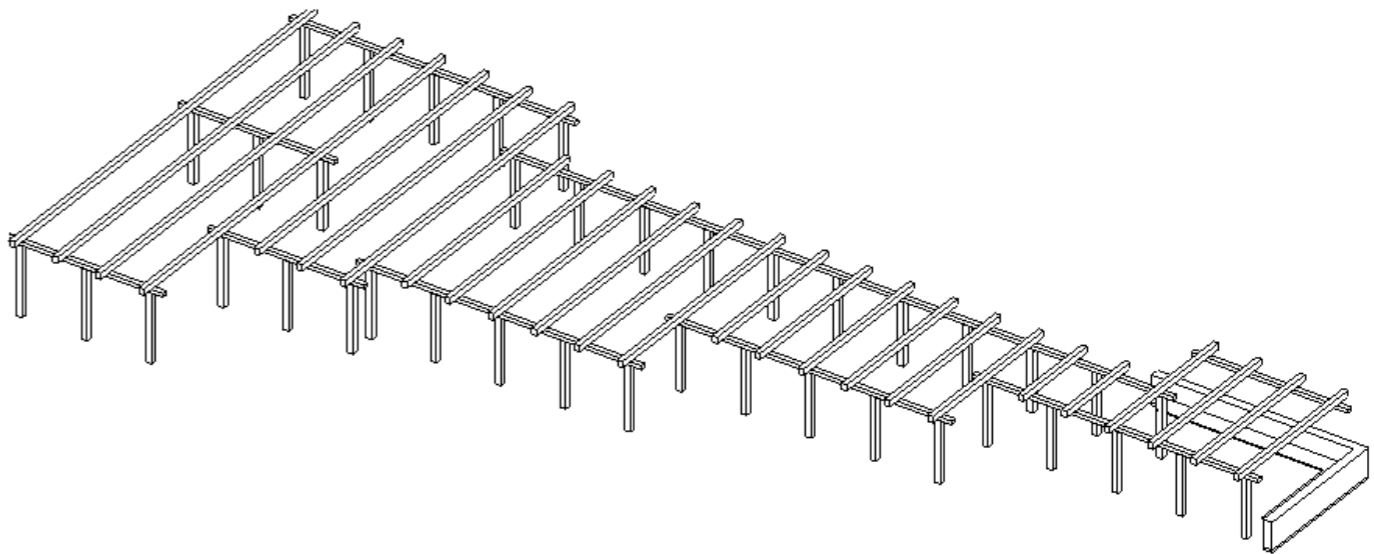
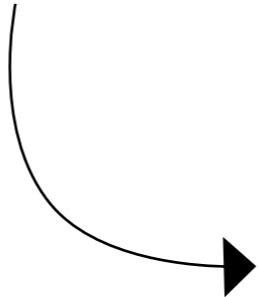
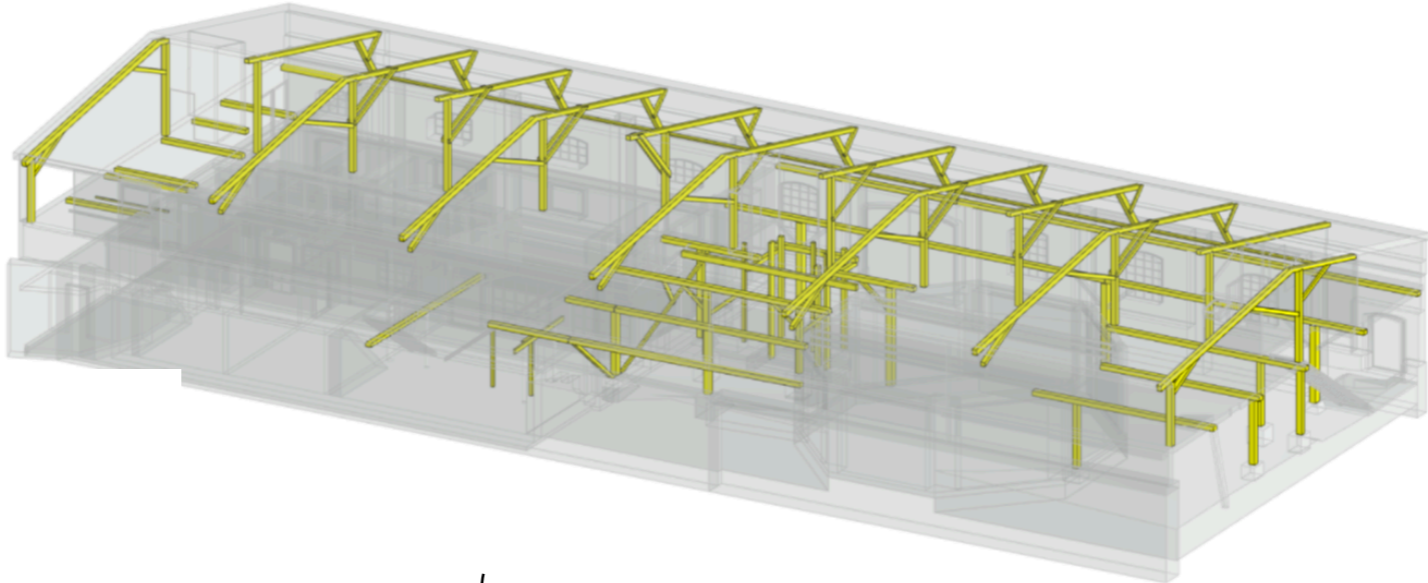
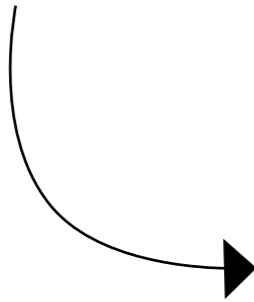
- **Demontera enbart 25% av de befintliga byggnaderna.**
- **60-70% mer sparat än bevarandekravet - Ca 400 ton CO2**
- **500 ton tegelsten är hittills skickat för återbruk.**
- **Ca 60% fasadyta är befintlig/återbrukad sten**



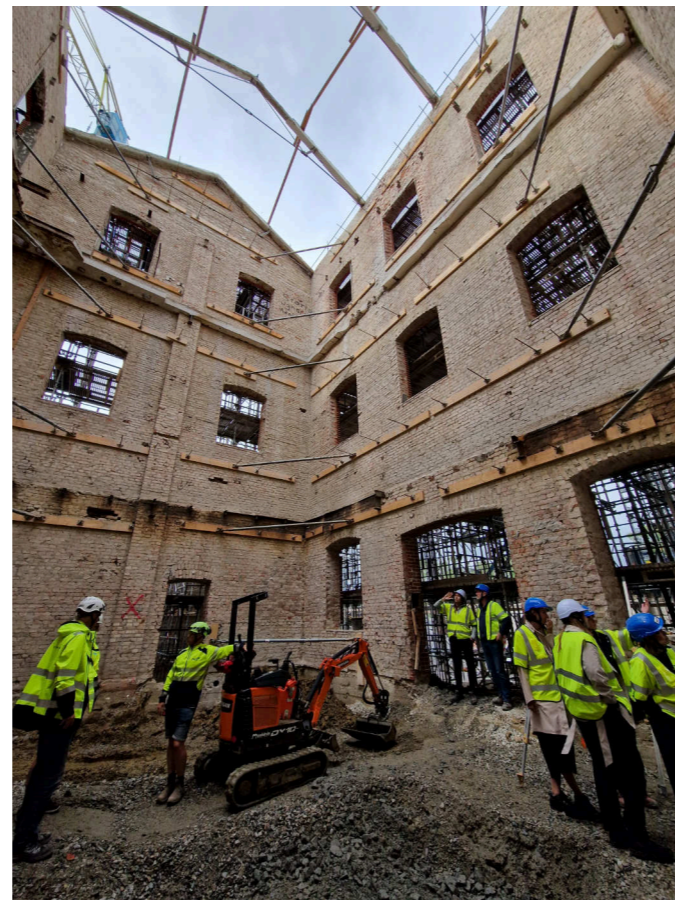
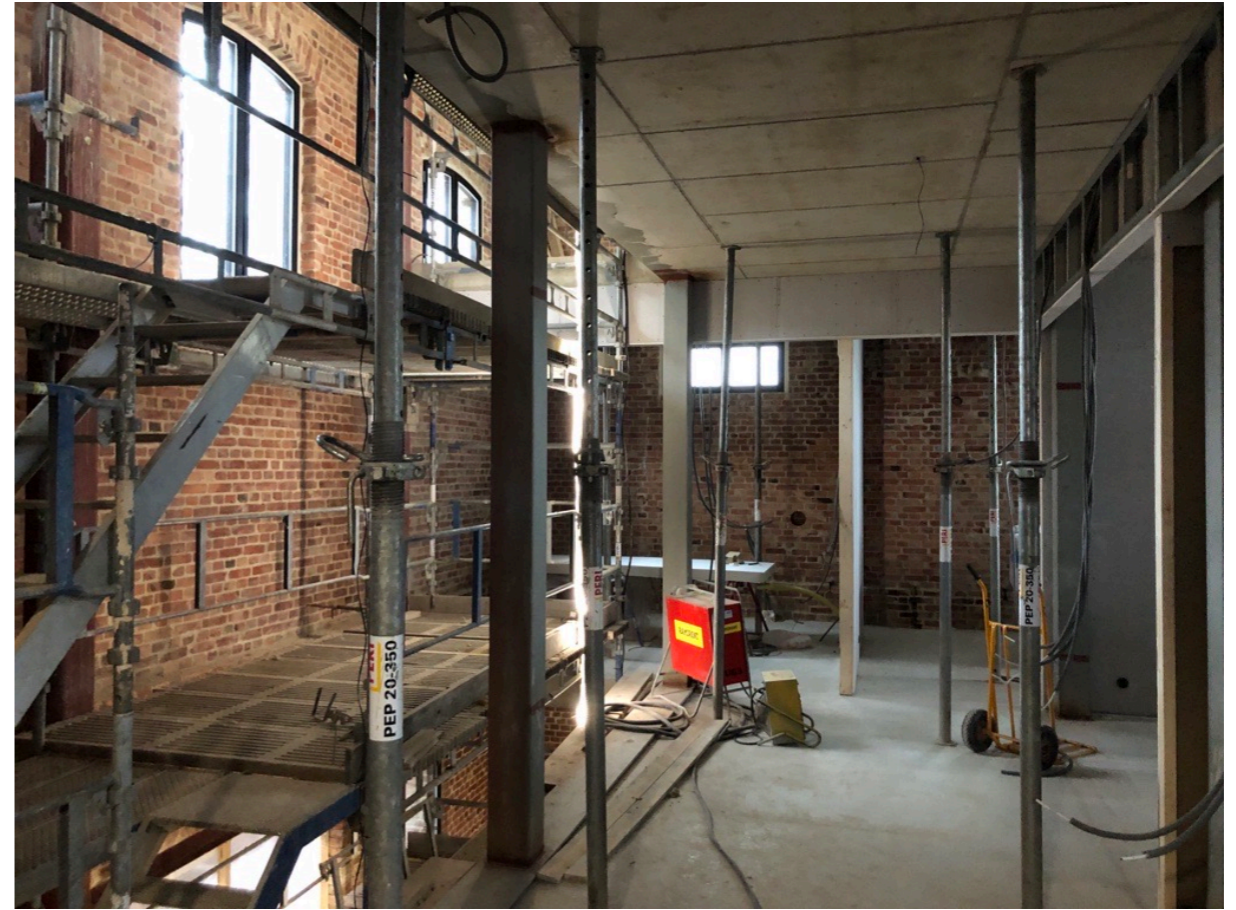
Transformerad pergola



Sprittfabriken









Summering

Sprittfabriken



LINK Arkitektur



Tack från LINK!

